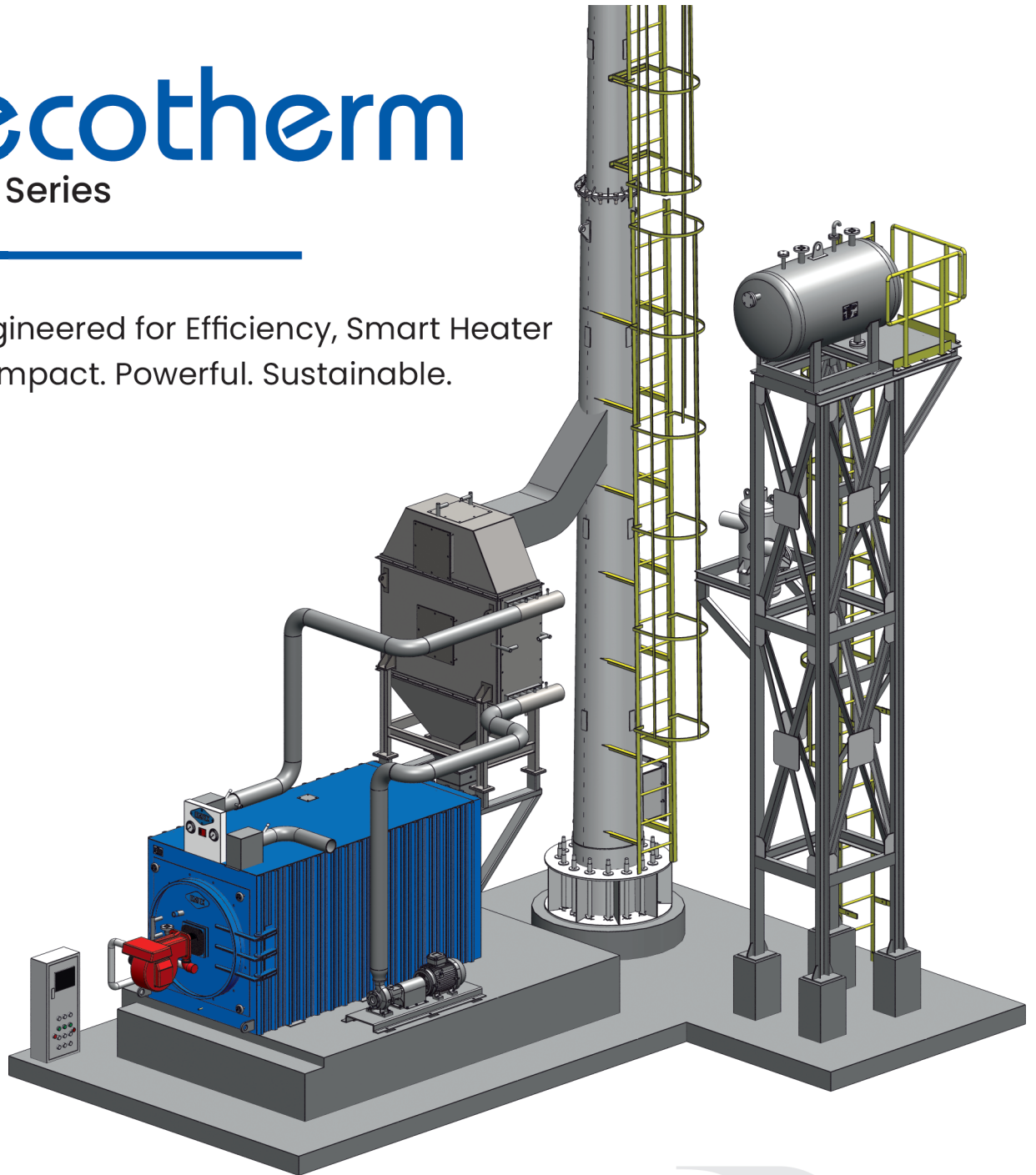




ecotherm

EX Series

Engineered for Efficiency, Smart Heater
Compact. Powerful. Sustainable.



3000+

INSTALLATION

across the globe

High Efficiency, Plug & Play Heater with Intelligent Automation

The Ecotherm EX Series combines high efficiency combustion, advanced heat-transfer technology, and modern automation in a compact, ready to install design. Engineered for reliable performance and simplified integration, it delivers maximum efficiency with minimal installation effort.



- Custom designed systems optimized for each site, not off-the-shelf catalog models.
- Faster delivery and single point project ownership from engineering to commissioning.
- Engineered for the lowest lifecycle cost - not just the initial price.
- Every product embodies five decades of heating energy excellence.

Built with plug-and-play simplicity, the modular design shortens project timelines, lowers installation costs, and ensures reliable performance from day one. Whether your priority is efficiency, uptime, or future expandability, our heater house is the smart choice for industries seeking ready solutions with flexible adaptability.

Combustion System Options



For customers demanding high efficiency and reliability, ISOTEX offers Riello Gas burners (Italy), with multibloc type gas train assembly.

Gas Fired Burner Advantages:

- 5-12% gas saving → fast payback
- Low maintenance & long life
- Industry-leading Low-NOx and clean emission
- Certified European safety → zero risk operation

A premium burner that delivers lower lifetime cost, higher performance, and maximum safety compared to local lance burners.

Constructional Features



Wet Back Reversal – Efficiency Built to Last

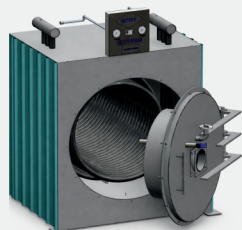
Unlike traditional refractory back cover designs, our fully oil-cooled turnaround chamber eliminates refractory dependency while ensuring near-zero maintenance and enhanced heat transfer.

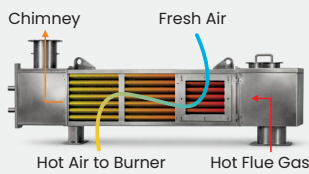
- **Longer Life:** Oil-cooled flue gas reversal eliminates refractory cracking & frequent repairs.
- **Higher Efficiency:** Reduced heat losses and improved heat transfer.
- **Low Maintenance:** Trouble-free operation with minimal downtime.
- **Safe & Reliable:** Robust design ensures maximum uptime and operational safety.

Hinged Door Construction

The hinged door provides quick access to the combustion chamber for easy inspection, cleaning, and maintenance.

- **Easy Access:** Wide opening for fast inspection and servicing
- **Reduced Downtime:** Faster maintenance minimizes shutdown time
- **Safe Operation:** Secure design ensures safe maintenance access
- **Low Maintenance:** Simplifies servicing and reduces upkeep cost





Efficiency Built to Last with External Air Preheater (EX-MAX)

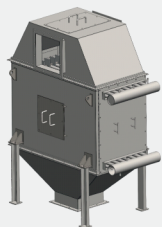
APH is a rugged heat-recovery unit that captures flue-gas energy to warm incoming combustion air. This boosts flame stability, improves combustion, and cuts fuel use, raising overall heater efficiency by upto 5%.

- **Fuel Savings:** Lower fuel bills with improved thermal efficiency.
- **Reduced Emissions:** An environmentally friendly solution that cuts CO₂ output.
- **Quick Payback:** Investment recovered rapidly through energy savings.

Special Mach CFD Tube in Air Preheater

Designed using advanced CFD principles, the Special Mach Tube improves heat transfer efficiency by creating controlled turbulence inside the flue gas path. The corrugated tube profile keeps the boundary layer continuously agitated, resulting in superior heat transfer, reduced fuel consumption, and lower emissions. This optimized heat exchanger improves overall heater efficiency by 4–6%, making it both an energy-efficient and eco-friendly solution.

- **Higher Efficiency:** Enhanced turbulence increases heat absorption and heater performance.
- **Lower Fuel Consumption:** Improved heat transfer reduces fuel usage and operating costs.
- **Extended Tube Life:** Optimized flow reduces thermal stress on tube surfaces.
- **Reduced Fouling:** Self-cleaning flow characteristics minimize deposits and ease maintenance.



Boost Heater Efficiency with Thermic Fluid Preheater (EX-E)

TFPH is a smart energy-saving device that recovers waste heat from flue gases and uses it to preheat thermic fluid. By utilizing this otherwise wasted energy, heater efficiency can be improved by upto 3%.

- **Fuel Savings:** Lower fuel bills with improved thermal efficiency.
- **Reduced Emissions:** An environmentally friendly solution that cuts CO₂ output.
- **Quick Payback:** Investment recovered rapidly through energy savings.



SMARTWIZ IoT Heater Control System – Efficiency at your fingertips

Our IoT-enabled Heater Control Panel brings intelligence, reliability, and remote accessibility to your heater operations. With real-time data monitoring, predictive maintenance alerts, and cloud-based analytics, you gain complete visibility and control over fuel efficiency, heat output, and other critical safety parameters.

- **24/7 Remote Access:** Monitor performance anytime, anywhere.
- **Data-Driven Insights:** Optimize fuel usage and reduce operating costs.
- **Predictive Maintenance:** Minimize downtime with early alerts.
- **Enhanced Safety:** Instant alarms and fault diagnostics.



Advanced Heater Tube Technology – Assured Strength, Efficiency & Reliability

Manufactured to ASTM standards, these tubes are specially designed to deliver superior heat transfer, withstand high pressure, and ensure long service life.

- **High Strength & Durability:** Withstands demanding operating conditions.
- **Excellent Heat Transfer:** Ensures optimum thermal efficiency for fuel savings.
- **Corrosion & Oxidation Resistance:** Performs under high temperature and pressure.
- **Precision Manufacturing:** Tighter ASTM protocols for tolerances and testing of tubes.
- **No Negative Tolerance:** Precisely controlled thickness ensures reliability.
- **Proven Industry Standard:** Widely used in industrial heaters worldwide.

Technical Specifications

Description	Units	EX-400	EX-600	EX-800	EX-1000	EX-1500	EX-2000
Heater capacity	Kcal/hr	4,00,000	6,00,000	8,00,000	10,00,000	15,00,000	20,00,000
Heat output	KW	465	698	930	1163	1744	2326
Max. T.F. outlet temperature (Std.)	°C	280					
Flowrate (Std.)	m ³ /hr	25	40	50	65	90	120
Efficiency on full load (+/-3%)	BS-845 Part 1 - Indirect Method on NCV Basis						
EX - E (Economizer)	%	Natural Gas : 90%					
Power supply	%	415 V +/- 6%, 50 Hz +/- 3%, AC Phase					
Total connected load (NG Fired Burner with 1W TF Pump)							
EX - E (Economizer)	KW	9	13	17	19	32	40

* Please refer offer document for more details.

Advanced heating made simple – Turnkey heater house, custom high-temp & high-flow solutions more than 300° C & Closed loop hot water systems up to 160°C can be provided

Established in 1978, with over 45+ years of excellence.

Isotex is a globally trusted leader in industrial boilers and heaters, delivering reliable, energy-efficient, and sustainable solutions. Leveraging expertise in diverse fuels and advanced automation, we design low-emission systems that optimize costs while safeguarding the environment. With a strong commitment to innovation, quality, and sustainability, Isotex continues to be the partner of choice for smart, future-ready heating solutions.



500CR

INR Annual Sales
Isotex Group



500+
Employees



1000+

Units Per Annum
Production
Capacity



70000 m²
Production
Facility

8500+
Installations



45+
Years Of
Experience



ISOTEX CORPORATION PVT LTD

Head Office:

Plot No.-178/1/C, GIDC Naroda, Ahmedabad Pin. 382 330

Ahmedabad Manufacturing:

Plot No.-181/2&3, GIDC Naroda, Ahmedabad Pin. 382 330

Dahej Manufacturing:

Plot No.-D-2 / E-76, Dahej Industrial Area, Dahej Pin. 392 130



☎ 079 2280 4321

📞 +91 63560 00600