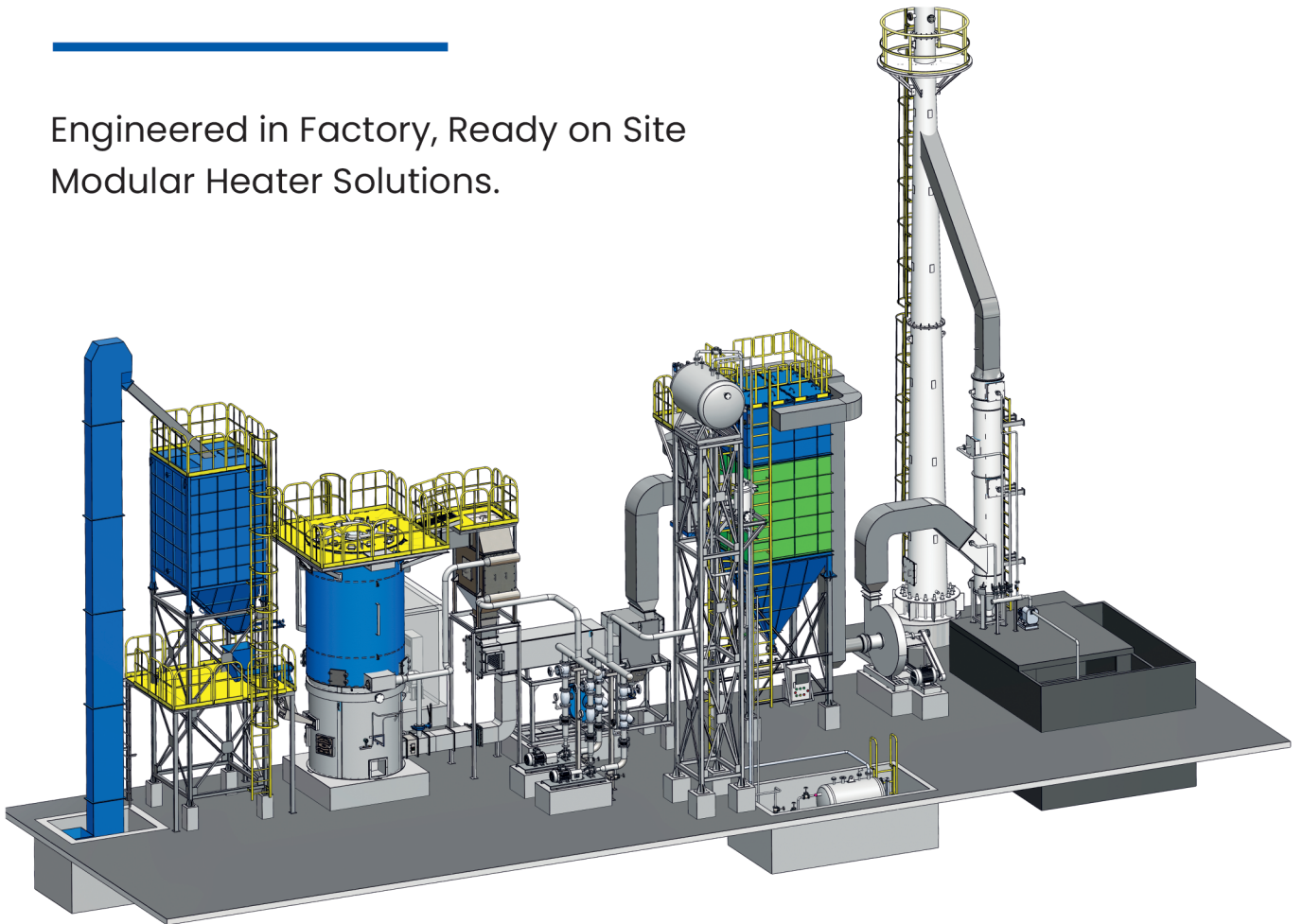




ecotherm

VX Series

Engineered in Factory, Ready on Site
Modular Heater Solutions.



4000+ INSTALLATION

across the globe

Plug & Play Heater House with Combustor & Layout Choices

Our modular heater house is engineered for quick installation, minimal site work, and maximum performance. Designed with customizable factory layout options, it delivers the perfect fit for your plant's space.



10 Lac Kcal/hr Heater

- Factory-Built Assurance – Quality-controlled, tested & proven performance
- Adaptable Engineering – Flexible for any space (LH, RH & straight options)



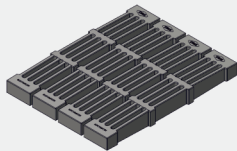
20 Lac Kcal/hr Heater

- Up to **74%** reduction in site installation costs
- Up to **46%** reduction in space utilization
- Up to **50%** reduction in refractory costs (Material & Labour)

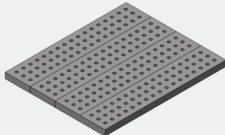
Built with plug-and-play simplicity, the modular design shortens project timelines, lowers installation costs, and ensures reliable performance from day one. Whether your priority is efficiency, uptime, or future expandability, our heater house is the smart choice for industries seeking ready solutions with flexible adaptability.

Combustion System Options

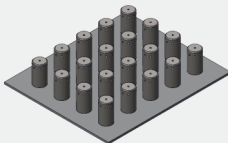
Available Fuel Options



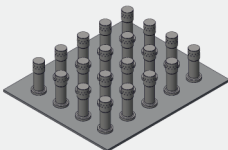
Stationary Grate



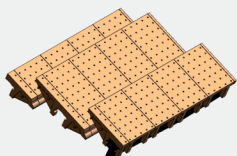
Pinhole Grate



Bubbling Bed



Fluidized cum Bubbling



Dumping Grate

Wood Logs



Rice Husk



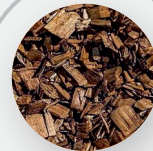
Briquettes



Pellets



Wood Chips



Coal



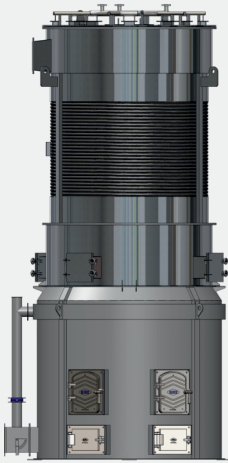
Ply Waste



Saw Dust



The Multifuel Flexible Combustor is designed to seamlessly adapt to variations in fuel quality and availability, ensuring uninterrupted operation with consistent performance.



Advanced Soot Blowing Technology – Ensuring Heater Efficiency & Reliability

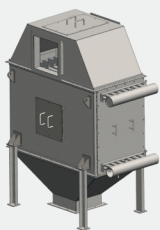
Our Soot Blowing System is designed to keep heater surfaces clean, ensuring maximum heat transfer, reduced fuel consumption, and extended heater life. By effectively removing soot, ash, and deposit build-up from heater tubes, the system guarantees consistent efficiency while preventing costly downtime.

- Improved fuel efficiency & reduced operating costs.
- Extended heater uptime with minimal maintenance.

Oil-Cooled Top Reversal – Efficiency Built to Last

Unlike traditional refractory top cover designs, it features a fully oil-cooled turnaround chamber that minimizes refractory maintenance and maximizes heat transfer.

- **Longer Life:** Oil-cooled top eliminates refractory cracking and frequent repairs.
- **Higher Efficiency:** Reduced heat losses and improved heat generation.
- **Low Maintenance:** Trouble-free operation with minimal downtime.
- **Safe & Reliable:** Robust design ensures maximum uptime and operational safety.



Boost Heater Efficiency with Thermic Fluid Preheater

TFPH is a smart energy-saving device that recovers waste heat from flue gases and uses it to preheat thermic fluid. By utilizing this otherwise wasted energy, heater efficiency can be improved by up to 3%.

- **Fuel Savings:** Lower fuel bills with improved thermal efficiency.
- **Reduced Emissions:** An environmentally friendly solution that cuts CO₂ output.
- **Quick Payback:** Investment recovered rapidly through energy savings.



SMARTWIZ IoT Heater Control System – Efficiency at your fingertips

Our IoT-enabled Heater Control Panel brings intelligence, reliability, and remote accessibility to your heater operations. With real-time data monitoring, predictive maintenance alerts, and cloud-based analytics, you gain complete visibility and control over fuel efficiency, heat output, and other critical safety parameters.

- **24/7 Remote Access:** Monitor performance anytime, anywhere.
- **Data-Driven Insights:** Optimize fuel usage and reduce operating costs.
- **Predictive Maintenance:** Minimize downtime with early alerts.
- **Enhanced Safety:** Instant alarms and fault diagnostics.



Advanced Heater Tube Technology – Assured Strength, Efficiency & Reliability

Manufactured to ASTM standards, these tubes are specially designed to deliver superior heat transfer, withstand high pressure, and ensure long service life.

- **High Strength & Durability:** Withstands demanding operating conditions.
- **Excellent Heat Transfer:** Ensures optimum thermal efficiency for fuel savings.
- **Corrosion & Oxidation Resistance:** Performs under high temperature and pressure.
- **Precision Manufacturing:** Tighter ASTM protocols for tolerances and testing of tubes.
- **No Negative Tolerance:** Precisely controlled thickness ensures reliability.
- **Proven Industry Standard:** Widely used in industrial heaters worldwide.

Technical Specifications

| Description | Units | VX-1000 | VX-1500 | VX-2000 | VX-2500 |
|---|--|--|-----------|-----------|-----------|
| Heater capacity | Kcal/hr | 10,00,000 | 15,00,000 | 20,00,000 | 25,00,000 |
| Heat output | KW | 1163 | 1744 | 2326 | 2907 |
| Max. T.F. outlet temperature (Std.) | °C | 280 | | | |
| Flowrate (Std.) | m ³ /hr | 65 | 90 | 120 | 150 |
| Efficiency on full load (+/-3%) | BS-845 Part 1 - Indirect Method on NCV Basis | | | | |
| Stationary grate | % | Wood & Indian Coal: 80% | | | |
| Bubbling bed | % | Indonesian coal / Biomass pellets: 82% | | | |
| Power supply | 415 V +/- 6%, 50 Hz +/- 3%, AC Phase | | | | |
| Total connected load (MDC + Bag Filter with 1W TF Pump) | | | | | |
| Stationary grate | KW | 35 | 47 | 62 | * |
| Bubbling bed | KW | 40 | 55 | 65 | 78 |

* Thermic heater options available - 4, 6 & 8 lac kcal/hr.

* Please refer offer document for more details.

** Refer respective GA Drawing for overall dimensions.

Advanced heating made simple – Turnkey heater house, custom high-temp & high-flow solutions more than 300° C & Closed loop hot water systems up to 160°C can be provided

Established in 1978, with over 45+ years of excellence.

Isotex is a globally trusted leader in industrial boilers and heaters, delivering reliable, energy-efficient, and sustainable solutions. Leveraging expertise in diverse fuels and advanced automation, we design low-emission systems that optimize costs while safeguarding the environment. With a strong commitment to innovation, quality, and sustainability, Isotex continues to be the partner of choice for smart, future-ready heating solutions.



500CR

INR Annual Sales
Isotex Group



500+
Employees



1000+

Units Per Annum
Production
Capacity



70000 m²
Production
Facility

8500+
Installations



45+
Years Of
Experience



ISOTEX CORPORATION PVT LTD

Head Office:

Plot No.-178/1/C, GIDC Naroda, Ahmedabad Pin. 382 330

Ahmedabad Manufacturing:

Plot No.-181/2&3, GIDC Naroda, Ahmedabad Pin. 382 330

Dahej Manufacturing:

Plot No.-D-2 / E-76, Dahej Industrial Area, Dahej Pin. 392 130



☎ 079 2280 4321

📞 +91 63560 00600